



POST-IMPERIAL

THAT TIME I WANTED TO BE SEEN BY...



POST-IMPERIAL

AN AESTHETIC EXPRESSION OF **MYTHMAKING**, EVALUATING CULTURAL **FUTURES** THROUGH THE LENS OF FASHION. THIS EXPRESSION IS ROOTED IN THE AFRICAN **DIASPORA**, THE THEORY OF **HUMANIZING MATERIALS** TO ESTABLISH ETHICAL RESPONSIBILITY AND THE CREATIVE **COLLABORATION** BETWEEN ARTISANS, MATTER AND THE ENVIRONMENT.

ADIRE

A TRADITIONAL HAND-DYING PROCESS DEVELOPED BY THE YORUBAS IN THE SOUTH-WEST REGION OF NIGERIA.

PRIOR TO DYEING, THE ARTIST HAND PAINTS PATTERNS USING WAX THAT ACTS AS THE RESIST DYE.

DUE TO THE NATURE OF THE PROCESS, EACH PRODUCT VARIES IN UNIQUENESS AND INDIVIDUALITY, GIVING THEM A ONE OF KIND ARTISANAL FEEL.

OUR DYEING COLLABORATORS ARE AN NGO CERTIFIED ORGANIZATION THAT HELPS TO PROMOTE AND IMPROVE THE WELLNESS OF THEIR COMMUNITY.





GREATER REFUGE TEMPLE IN HARLEM - COSTAS MACHLOUZARIDES

S/S 21

**THIS COLLECTION IS INSPIRED BY TOOLS AND SPACES USED FOR RITUALS AND PRACTICES.
THESE TOOLS ALLOW FOR US TO BE SEEN BY PEOPLE AND FORCES.**



OSOGBO TOP

- SHORT SLEEVE CROPPED KAFATAN.
- OVERSIZED BOXY FIT.
- SIDE VENTS.
- TAIL HEM.
- SCALLOPED HEM.
- LOCKER LOOP MADE OUT OF OUR OFF-CUT FABRICS.
- HAND-DYED IN NIGERIA USING THE ADIRE DYEING PROCESS.
- CAN BE STYLED WITH LOOSE PANTS FOR A BREEZY FEEL.



OSOGBO TOP

YELLOW



INDIGO



WHITE



PATTERN

SOLID.

FABRIC

100% EYELET COTTON.

PRICE

\$98/\$245

STYLE NUMBER

PIMWS005-EYT-SS

SIZES

XS, S, M, L, XL

OSOGBO TOP

INDIGO-YELLOW



RED-WHITE



PATTERN

MEGA DOT.

FABRIC

100% EYELET COTTON.

PRICE

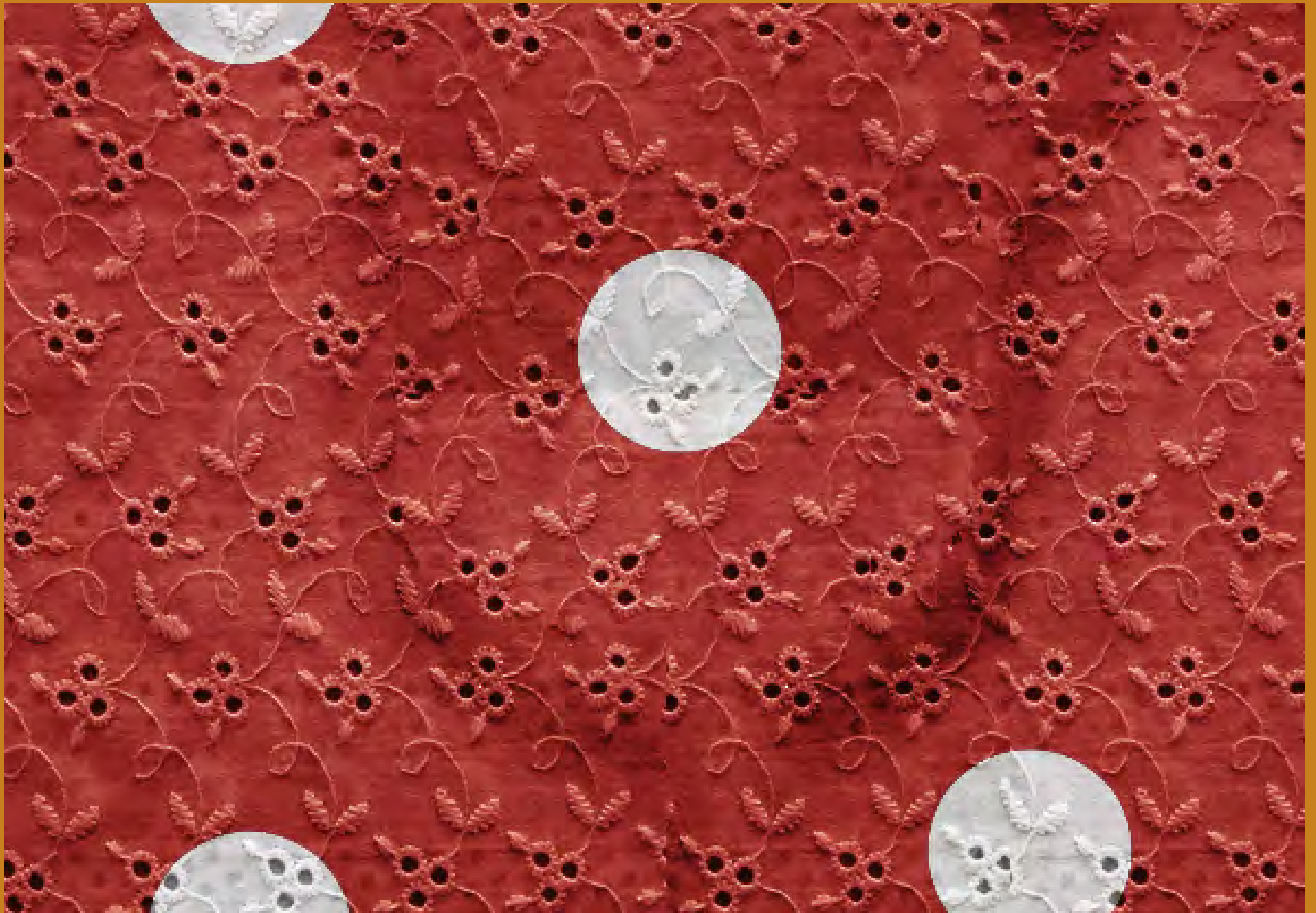
\$98/\$245

STYLE NUMBER

PIMWS005-EYT-MD

SIZES

XS, S, M, L, XL





GANDO SCHOOL LIBRARY IN BURKINA FASO- FRANCIS KERE



IJEBU SHIRT

- SHORT SLEEVE CAMP COLLAR SHIRT.
- OVERSIZED BOXY FIT.
- PATCH POCKET PLACED ON TOP OF THE FRONT LEFT PANEL SEAM.
- SIDE VENTS.
- LOCKER LOOP MADE OUT OF OUR OFF-CUT FABRICS.
- HAND-DYED IN NIGERIA USING THE ADIRE DYEING PROCESS.
- BEST WORN AS AN OVERSHIRT WITH A TEE UNDER IT BREEZY FEEL.



IJEBU SHIRT

INDIGO-YELLOW



RED-WHITE



INDIGO-WHITE



PATTERN

MEGA DOT.

FABRIC

100% EYELET COTTON.

PRICE

\$118/\$295

STYLE NUMBER

PIMWS004-EYT-MD

SIZES

XS, S, M, L, XL

IJEBU SHIRT

INDIGO-AZURE



ORANGE-WHITE



BROWN-WHITE



PATTERN

TILTED WINDOWPANE

FABRIC

100% EYELET COTTON.

PRICE

\$118/\$295

STYLE NUMBER

PIMWS004-EYT-TW

SIZES

XS, S, M, L, XL



IJEBU SHIRT

YELLOW



INDIGO



BLACK



WHITE



PATTERN

SOLID.

FABRIC

100% EYELET COTTON.

PRICE

\$118/\$295

STYLE NUMBER

PIMWS004-EYT-SS

SIZES

XS, S, M, L, XL

IJEBU SHIRT

GREEN-ORANGE



BROWN-RED



PATTERN

MEGA DOT (COWRIE SHELL).

FABRIC

100% FUNTUA COTTON.

PRICE

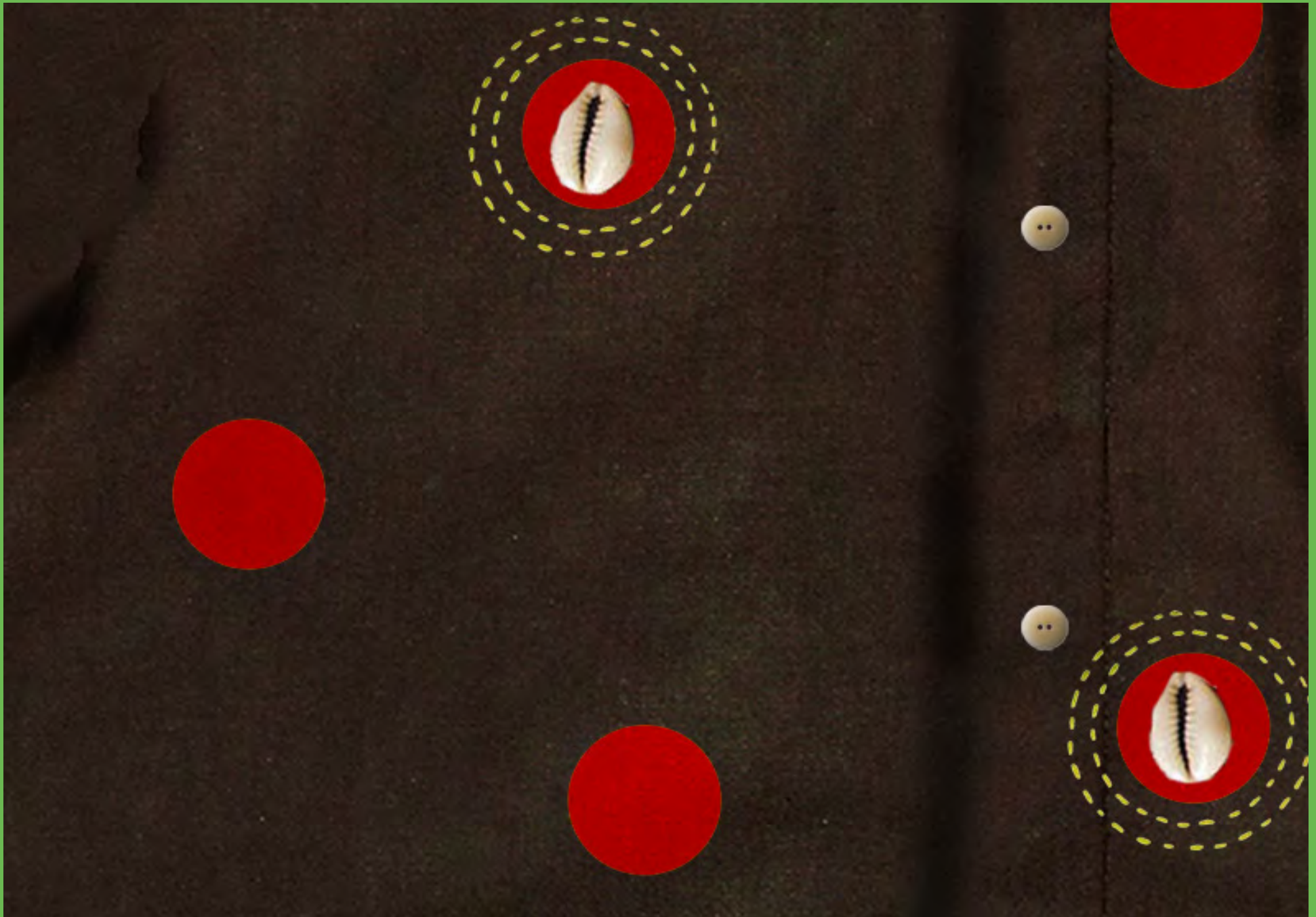
\$130/\$325

STYLE NUMBER

PIMWS004-FNT-MD*

SIZES

XS, S, M, L, XL





YORUBA IBEJI (TWIN) STATUES IN TRADITIONAL COWRIE SHELLS

IJEBU SHIRT

GREEN-WHITE



INDIGO-WHITE



PATTERN

BROKEN STRIPE (MAASAI BEAD).

FABRIC

100% FUNTUA COTTON.

PRICE

\$130/\$325

STYLE NUMBER

PIMWS004-FNT-BS*

SIZES

XS, S, M, L, XL





MAASAI WOMEN WEARING TRADITIONAL MAASAI BEADED JEWELRY

IJEBU SHIRT

CLAY



PINK



INDIGO



PATTERN

BROKEN STRIPE PANEL.

FABRIC

100% FUNTUA COTTON.

PRICE

\$94/\$235

STYLE NUMBER

PIMWS004-FNT-BP

SIZES

XS, S, M, L, XL

IJEBU SHIRT

AZURE-WHITE



CLAY-WHITE



INDIGO-YELLOW



PATTERN

CURVED FISHBONE.

FABRIC

100% FUNTUA COTTON.

PRICE

\$94/\$235

STYLE NUMBER

PIMWS004-FNT-CF

SIZES

XS, S, M, L, XL



LAGOS SHIRT

- SHORT SLEEVE CASUAL COLLAR SHIRT.
- STANDARD FIT.
- HIDDEN PLACKET.
- SIDE VENTS.
- LOCKER LOOP MADE OUT OF OUR OFF-CUT FABRICS.
- HAND-DYED IN NIGERIA USING THE ADIRE DYEING PROCESS.
- OUR BEST SELLING PRODUCT THAT CAN BE WORN WITH MANY LOOKS.



LAGOS SHIRT

LIME-INDIGO



YELLOW-INDIGO



WHITE-INDIGO



PATTERN

BAR STRIPE.

FABRIC

100% FUNTUA COTTON.

PRICE

\$90/\$225

STYLE NUMBER

PIMWS003-FNT-BR

SIZES

XS, S, M, L, XL

LAGOS SHIRT

YELLOW-INDIGO/LIME-INDIGO



WHITE-INDIGO



PATTERN

BAR STRIPE (COMBO).

FABRIC

100% FUNTUA COTTON.

PRICE

\$90/\$225

STYLE NUMBER

PIMWS003-FNT-BC

SIZES

XS, S, M, L, XL



EXTENSION OF THE PRIMARY SCHOOL IN GANDO - FRANCIS KERE

LAGOS SHIRT

CLAY



AZURE



INDIGO



PATTERN

SOLID.

FABRIC

100% FUNTUA COTTON.

PRICE

\$90/\$225

STYLE NUMBER

PIMWS003-FNT-SS

SIZES

XS, S, M, L, XL



IJEBU TEE

- SHORT SLEEVE PATTERN TEE.
- STANDARD FIT.
- LOCKER LOOP MADE OUT OF OUR OFF-CUT FABRICS.
- HAND-DYED IN NIGERIA USING THE ADIRE DYEING PROCESS.
- COLORFUL TEES THAT CAN BE WORN ALL YEAR ROUND.



IJEBU TEE

PINK/ORANGE



YELLOW/AZURE



INDIGO/YELLOW



PATTERN

GRADIENT SCATTERED DOT.

FABRIC

100% COTTON.

PRICE

\$30/\$75

STYLE NUMBER

PIMKT003-BGT-SD

SIZES

XS, S, M, L, XL

IJEBU TEE

PINK-WHITE



RED-WHITE



INDIGO-WHITE



PATTERN

CIRCLE.

FABRIC

100% COTTON.

PRICE

\$30/\$75

STYLE NUMBER

PIMKT003-BGT-CC

SIZES

XS, S, M, L, XL

IJEBU TEE

INDIGO-WHITE



YELLOW-WHITE



ORANGE-WHITE



PATTERN

MEGA DOT.

FABRIC

100% COTTON.

PRICE

\$30/\$75

STYLE NUMBER

PIMKT003-BGT-MD

SIZES

XS, S, M, L, XL

IJEBU TEE

INDIGO-WHITE (FRONT)



INDIGO-WHITE (BACK)



LIME-WHITE (FRONT)



LIME-WHITE (BACK)



PATTERN
QUOTE.

FABRIC
100% COTTON.

PRICE
\$30/\$75

STYLE NUMBER
PIMKT003-BGT-QT

SIZES
XS, S, M, L, XL



IKEJA TEE

- SHORT SLEEVE SPLIT TEE.
- STANDARD FIT.
- LOCKER LOOP MADE OUT OF OUR OFF-CUT FABRICS.
- HAND-DYED IN NIGERIA USING THE ADIRE DYEING PROCESS.
- MADE BY COMBINING TWO DEADSTOCK TEES.



IKEJA LOGO TEE

INDIGO/AZURE



AZURE/INDIGO



AZURE



INDIGO



PATTERN

LOGO COMBO.

FABRIC

100% COTTON.

PRICE

\$50/\$125

STYLE NUMBER

PIMKT002-BGT-LG

SIZES

XS, S, M, L, XL

IKEJA LOGO TEE

INDIGO/PINK



PINK/INDIGO



PATTERN

LOGO/DOODLE COMBO.

FABRIC

100% COTTON.

PRICE

\$50/\$125

STYLE NUMBER

PIMKT002-BGT-LD

SIZES

XS, S, M, L, XL

IKEJA TEE

INDIGO-LIME/INDIGO-AZURE



INDIGO/INDIGO-LIME



INDIGO-AZURE/INDIGO



PATTERN

BAR STRIPE COMBO.

FABRIC

100% COTTON.

PRICE

\$50/\$125

STYLE NUMBER

PIMKT001-BGT-BC

SIZES

XS, S, M, L, XL



IKEJA JACKET

- LONG SLEEVE SHIRT JACKET.
- STANDARD FIT.
- SNAP BUTTONS.
- EXTENDED LINING.
- LOCKER LOOP MADE OUT OF OUR OFF-CUT FABRICS.
- HAND-DYED IN NIGERIA USING THE ADIRE DYEING PROCESS.
- LIGHTWEIGHT JACKET THAT CAN BE STYLED WITH A SIMPLE OUTFIT.



IKEJA JACKET

AZURE



KHAKI



PATTERN

SHEKERE NET.

FABRIC

100% FUNTUA COTTON.

PRICE

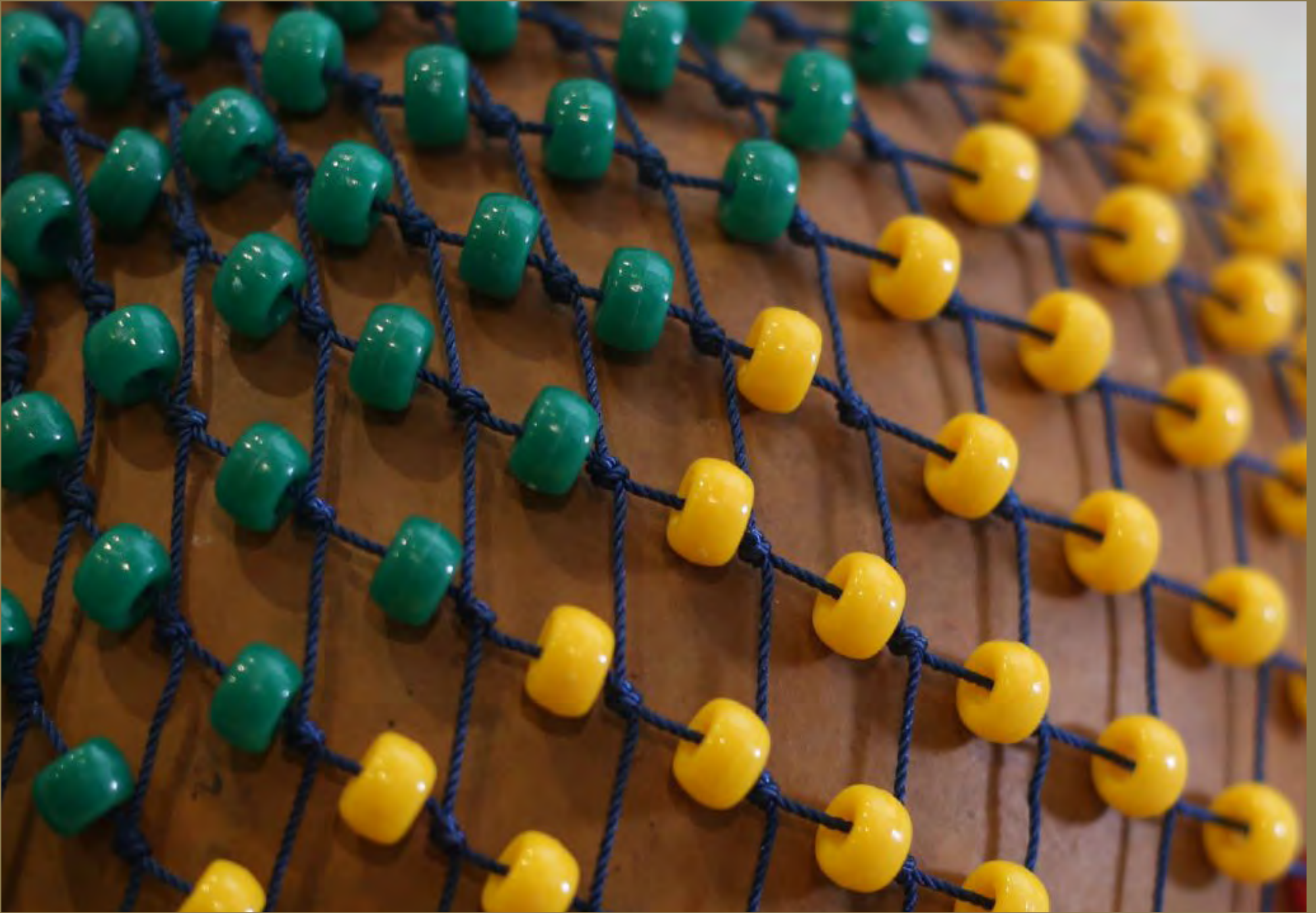
\$130/\$325

STYLE NUMBER

PIMWJ001-FNT-SN

SIZES

XS, S, M, L, XL



BEADING DETAILS OF THE SHEKERE; AN INSTRUMENT USED FOR TRADITIONAL RITUALS & CEREMONIES.

IKEJA JACKET

BLACK-PINK



BLACK-WHITE



PATTERN

VERTICAL WAVES.

FABRIC

100% FUNTUA COTTON.

PRICE

\$130/\$325

STYLE NUMBER

PIMWJ001-FNT-VW

SIZES

XS, S, M, L, XL

IKEJA JACKET

INDIGO



PINK



PATTERN

SOLID.

FABRIC

100% FUNTUA COTTON.

PRICE

\$130/\$325

STYLE NUMBER

PIMWJ001-FNT-SS

SIZES

XS, S, M, L, XL

IKEJA JACKET

YELLOW



LIME



INDIGO



PATTERN

TIE-DYE MARBLE.

FABRIC

100% COTTON CANVAS.

PRICE

\$130/\$325

STYLE NUMBER

PIMWJ001-CNV-TD

SIZES

XS, S, M, L, XL

IKOYI JACKET

- SINGLE BUTTON SPORT JACKET.

- STANDARD FIT.

- PATCH POCKETS.

- LOCKER LOOP MADE OUT OF OUR OFF-CUT FABRICS.

- HAND-DYED IN NIGERIA USING THE ADIRE DYEING PROCESS.

- JACKET CAN BE WORN AS A SUIT OR SEPARATE.



IKOYI JACKET

LIME-INDIGO



AZURE-INDIGO



WHITE-INDIGO



PATTERN

BAR STRIPE.

FABRIC

100% FUNTUA COTTON.

PRICE

\$238/\$595

STYLE NUMBER

PIMWJ002-FNT-BR

SIZES

36, 38, 40, 42, 44

IKOYI JACKET

INDIGO



PINK



PATTERN

SOLID.

FABRIC

100% FUNTUA COTTON.

PRICE

\$238/\$595

STYLE NUMBER

PIMWJ002-FNT-SS

SIZES

36, 38, 40, 42, 44



IKEJA PANT

- WIDE TROUSER.
- LOOSE FIT.
- SEAM POCKETS.
- GROSGRAIN DRAWSTRING.
- SEAM POCKETS.
- LOCKER LOOP MADE OUT OF OUR OFF-CUT FABRICS.
- HAND-DYED IN NIGERIA USING THE ADIRE DYEING PROCESS.
- LOOSE FIT PANTS THAT CAN ADD INTERESTING VOLUME TO YOUR OUTFIT



IKEJA PANT

AZURE



KHAKI



PATTERN

SHEKERE NET

FABRIC

100% FUNTUA COTTON.

PRICE

\$98/\$245

STYLE NUMBER

PIMWP001-FNT-SN

SIZES

XS, S, M, L, XL

IKEJA PANT

BLACK-PINK



BLACK-WHITE



PATTERN

VERTICAL WAVES

FABRIC

100% FUNTUA COTTON.

PRICE

\$98/\$245

STYLE NUMBER

PIMWP001-FNT-VW

SIZES

XS, S, M, L, XL

IKEJA PANT

LIME-INDIGO



AZURE-INDIGO



WHITE-INDIGO



PATTERN

BAR STRIPE.

FABRIC

100% FUNTUA COTTON.

PRICE

\$98/\$245

STYLE NUMBER

PIMWP001-FNT-BR

SIZES

XS, S, M, L, XL

IKEJA PANT

INDIGO



PINK



PATTERN

SOLID

FABRIC

100% FUNTUA COTTON.

PRICE

\$98/\$245

STYLE NUMBER

PIMWP001-FNT-SS

SIZES

XS, S, M, L, XL

IKEJA PANT

YELLOW



LIME



INDIGO



PATTERN

TIE-DYE MARBLE

FABRIC

100% COTTON CANVAS.

PRICE

\$98/\$245

STYLE NUMBER

PIMWP001-CNV-TD

SIZES

XS, S, M, L, XL



IKEJA SHORTS

- WIDE SHORTS.
- LOOSE FIT.
- SEAM POCKETS.
- GROSGRAIN DRAWSTRING.
- SEAM POCKETS.
- LOCKER LOOP MADE OUT OF OUR OFF-CUT FABRICS.
- HAND-DYED IN NIGERIA USING THE ADIRE DYEING PROCESS.
- LOOSE FIT WITH BREATHABLE FABRIC MAKES THIS PERFECT FOR THE WARMER MONTHS.



IKEJA SHORTS

INDIGO-YELLOW



RED-WHITE



PATTERN

MEGA DOT.

FABRIC

100% EYELET COTTON.

PRICE

\$90/\$225

STYLE NUMBER

PIMWP003-EYT-MD

SIZES

XS, S, M, L, XL

IKEJA SHORTS

YELLOW



INDIGO



WHITE



PATTERN

SOLID.

FABRIC

100% EYELET COTTON.

PRICE

\$90/\$225

STYLE NUMBER

PIMWP003-EYT-SS

SIZES

XS, S, M, L, XL



ELEGUSHI HAT

- 6 PANEL BUCKET HAT.
- STANDARD FIT.
- LOCKER LOOP MADE OUT OF OUR OFF-CUT FABRICS.
- HAND-DYED IN NIGERIA USING THE ADIRE DYEING PROCESS.
- NUMEROUS COLOR OPTIONS TO DRESS UP OR DRESS DOWN WITH.



ELEGUSHI HAT

YELLOW



GREEN



INDIGO



PATTERN

BROKEN STRIPE (MAASAI BEAD).

FABRIC

100% FUNTUA COTTON.

PRICE

\$58/\$145

STYLE NUMBER

PIMWA001-FNT-BS*

SIZES

ONE SIZE.

ELEGUSHI HAT

RED-WHITE



INDIGO-WHITE



INDIGO-YELLOW



PATTERN

MEGA DOT.

FABRIC

100% EYELET COTTON.

PRICE

\$58/\$145

STYLE NUMBER

PIMWA001-EYT-MD

SIZES

ONE SIZE.

ELEGUSHI HAT

INDIGO



BLACK



WHITE



PATTERN

SOLID.

FABRIC

100% EYELET COTTON.

PRICE

\$58/\$145

STYLE NUMBER

PIMWA001-EYT-SS

SIZES

ONE SIZE.

ELEGUSHI HAT

LIME



YELLOW



INDIGO



PATTERN

TIE-DYE MARBLE (COWRIE SHELL).

FABRIC

100% COTTON CANVAS.

PRICE

\$58/\$145

STYLE NUMBER

PIMWA001-CNV-TD*

SIZES

ONE SIZE.





OSOGBO SCARF

- 20" X 20" BANDANA.
- RAW EDGES WITH CONTRAST STITCH.
- LOCKER LOOP MADE OUT OF OUR OFF-CUT FABRICS.
- HAND-DYED IN NIGERIA USING THE ADIRE DYEING PROCESS.
- CAN BE FOLDED AND WORN AS A MASK.



OSOGBO SCARF

LIME-INDIGO



AZURE-INDIGO



WHITE-INDIGO



PATTERN

BAR STRIPE.

FABRIC

100% FUNTUA COTTON.

PRICE

\$38/\$95

STYLE NUMBER

PIMWA003-FNT-BR

SIZES

ONE SIZE.